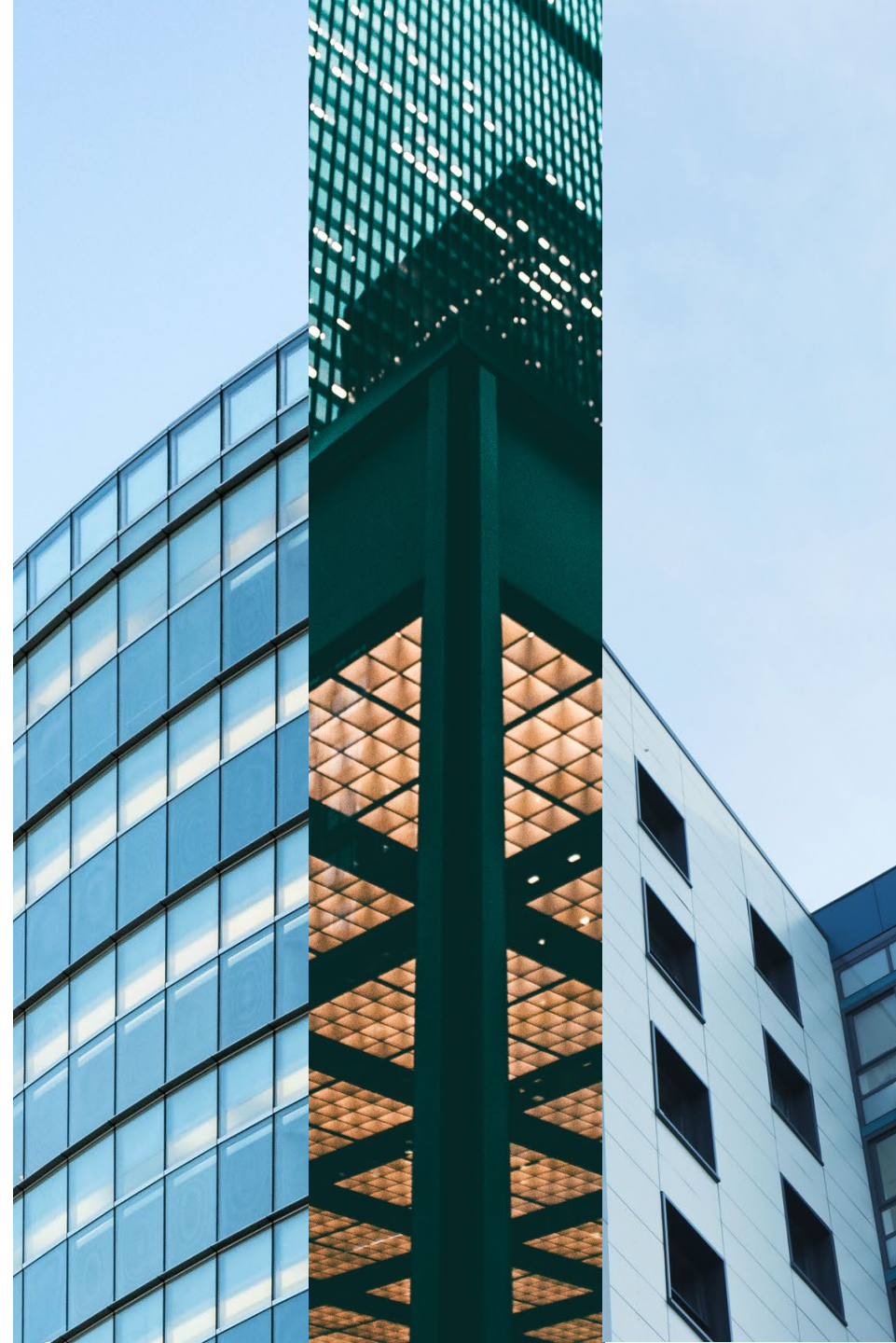


How AI can support **International Trained Professionals**

A proof of concept



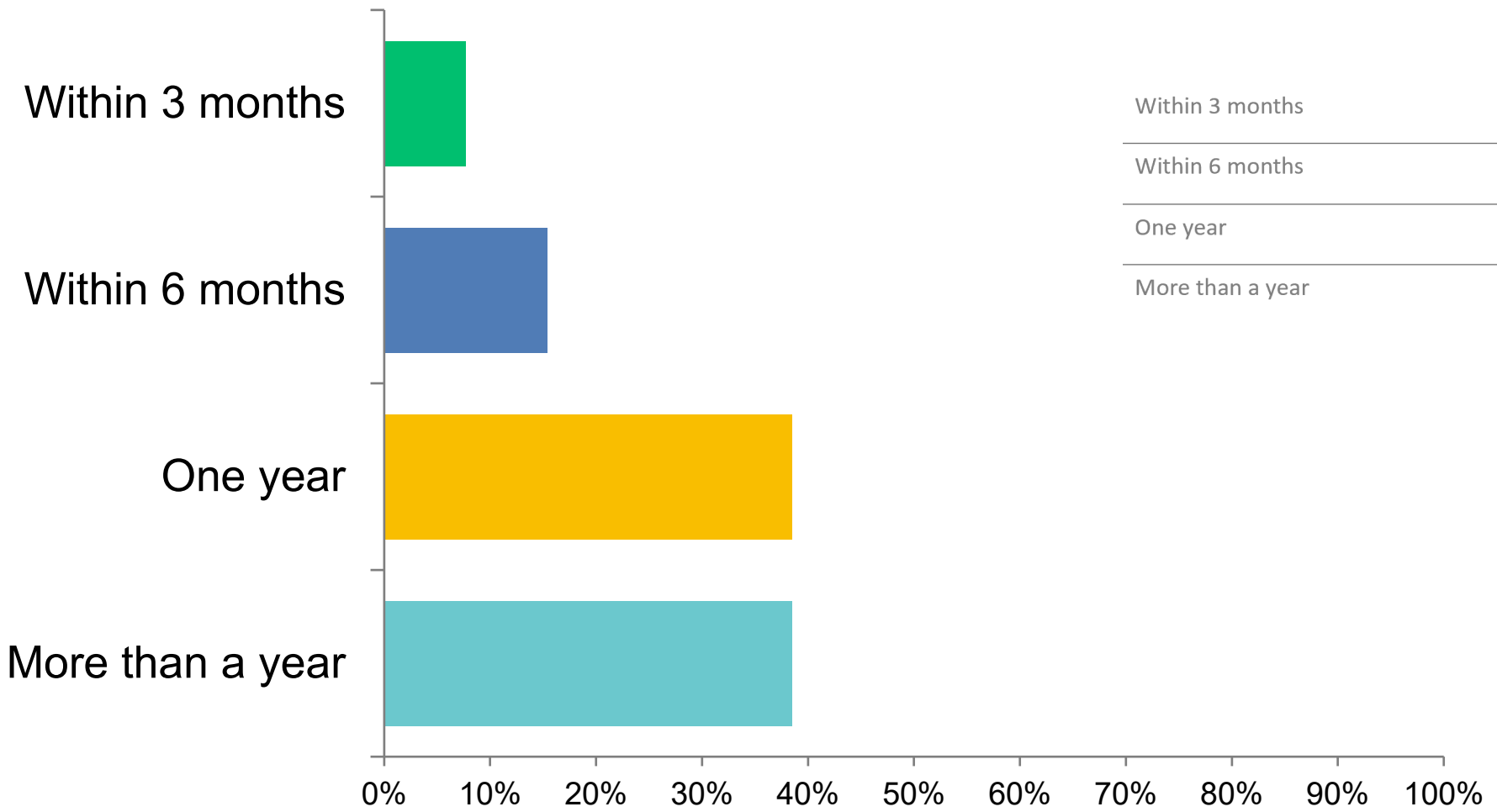
SURVEY

Internationally Trained Architects

April 2024



How long did it take for you to find the accurate information to become qualified to work in your profession?



SURVEY



SEC

Social Enterprise for Canada

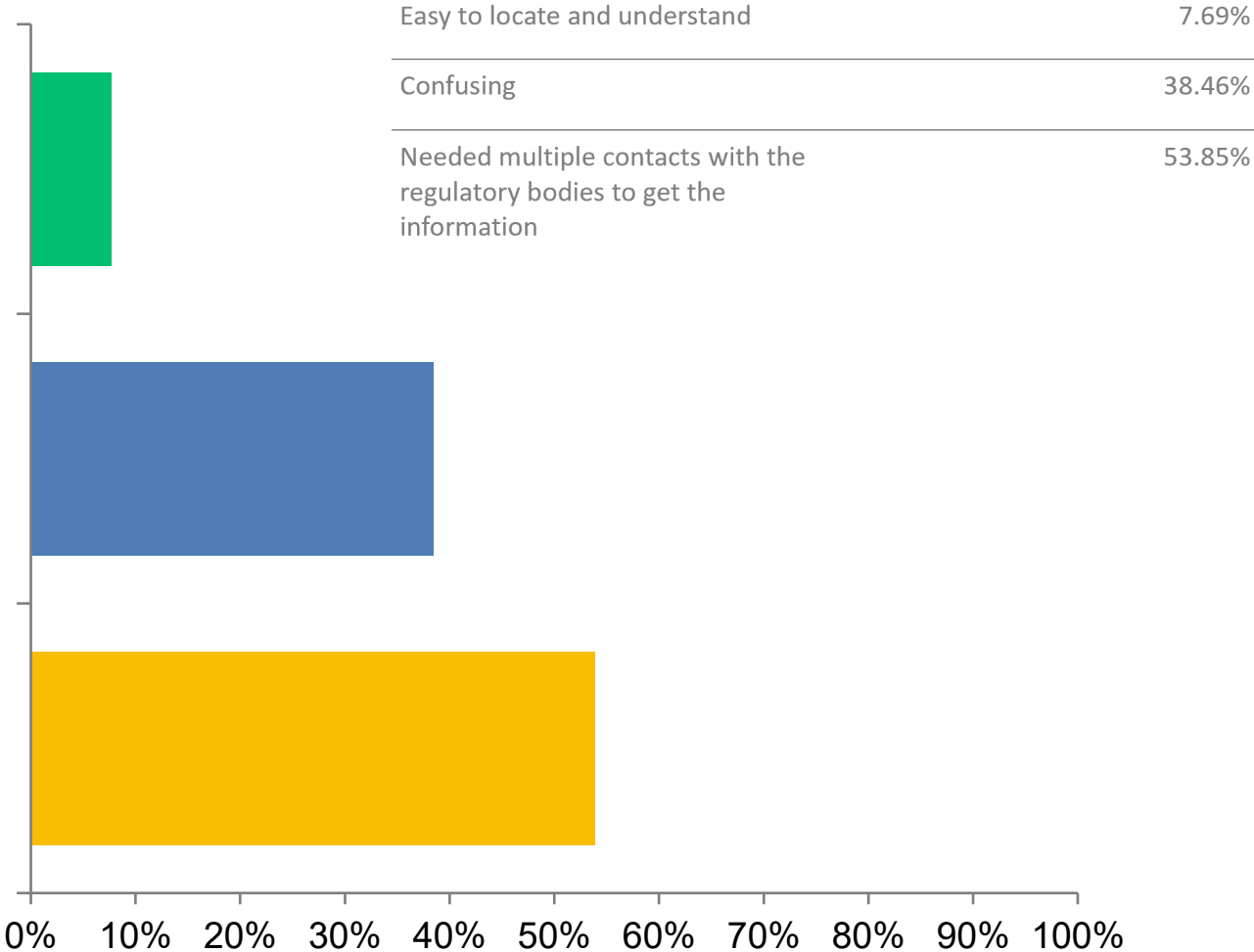


Was the information ...

Easy to locate and understand

Confusing

Needed multiple contacts with the regulatory bodies to get the information



SURVEY

Internationally Trained Engineers

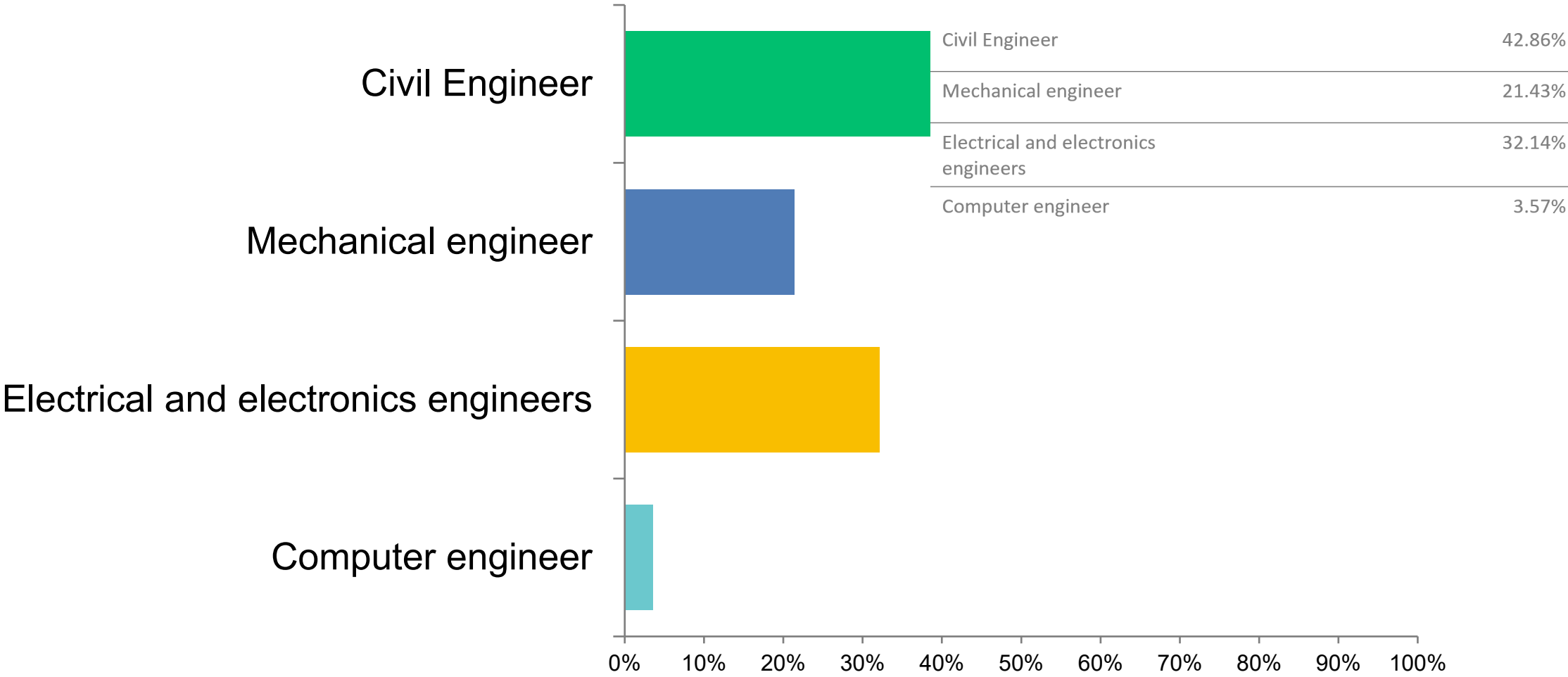
April 2024



What was your profession in your home country?



An SEC Immigrant Networks Survey



SURVEY

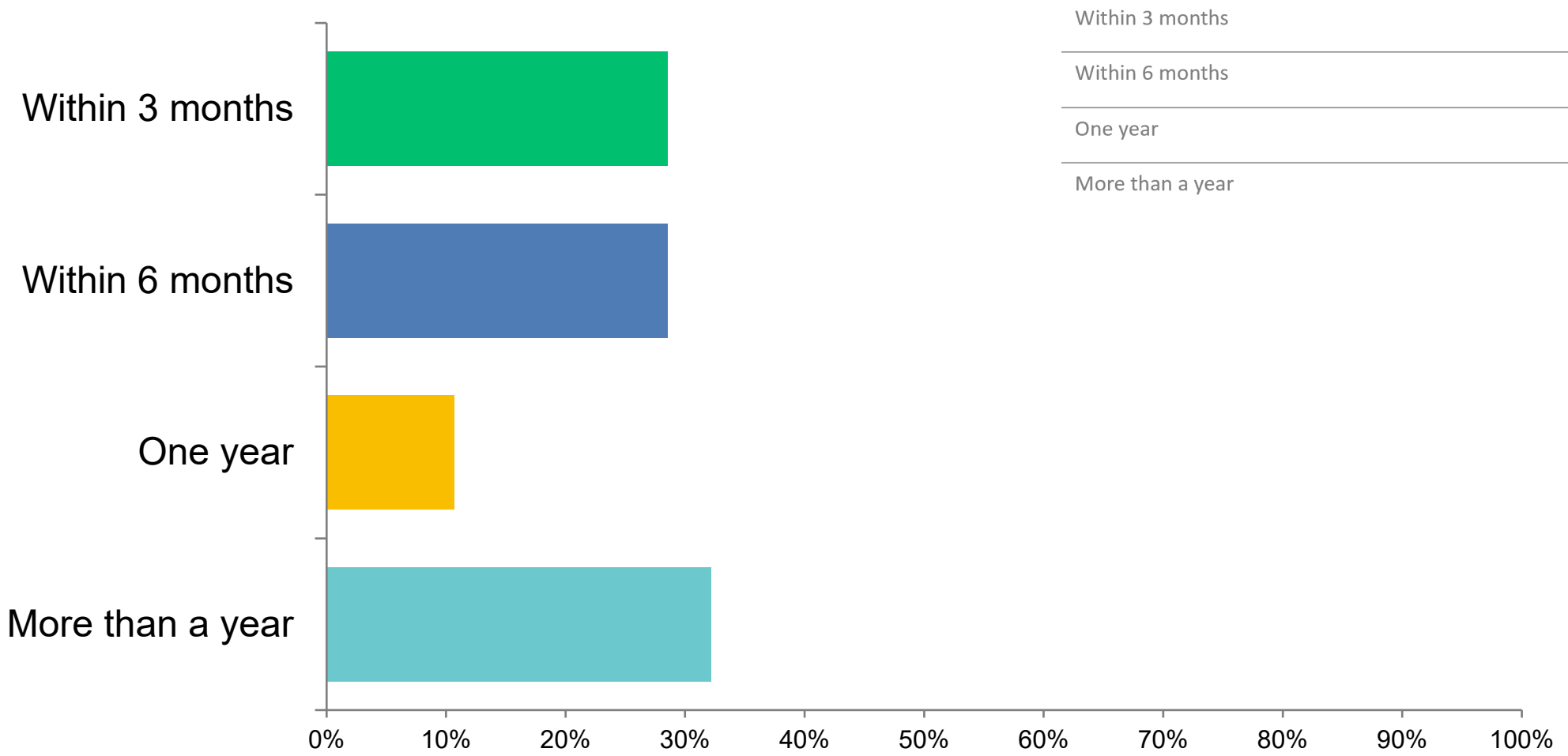


SEC

Social Enterprise for Canada



How long did it take for you to find the accurate information to become qualified to work in your profession?



SURVEY



Social Enterprise for Canada

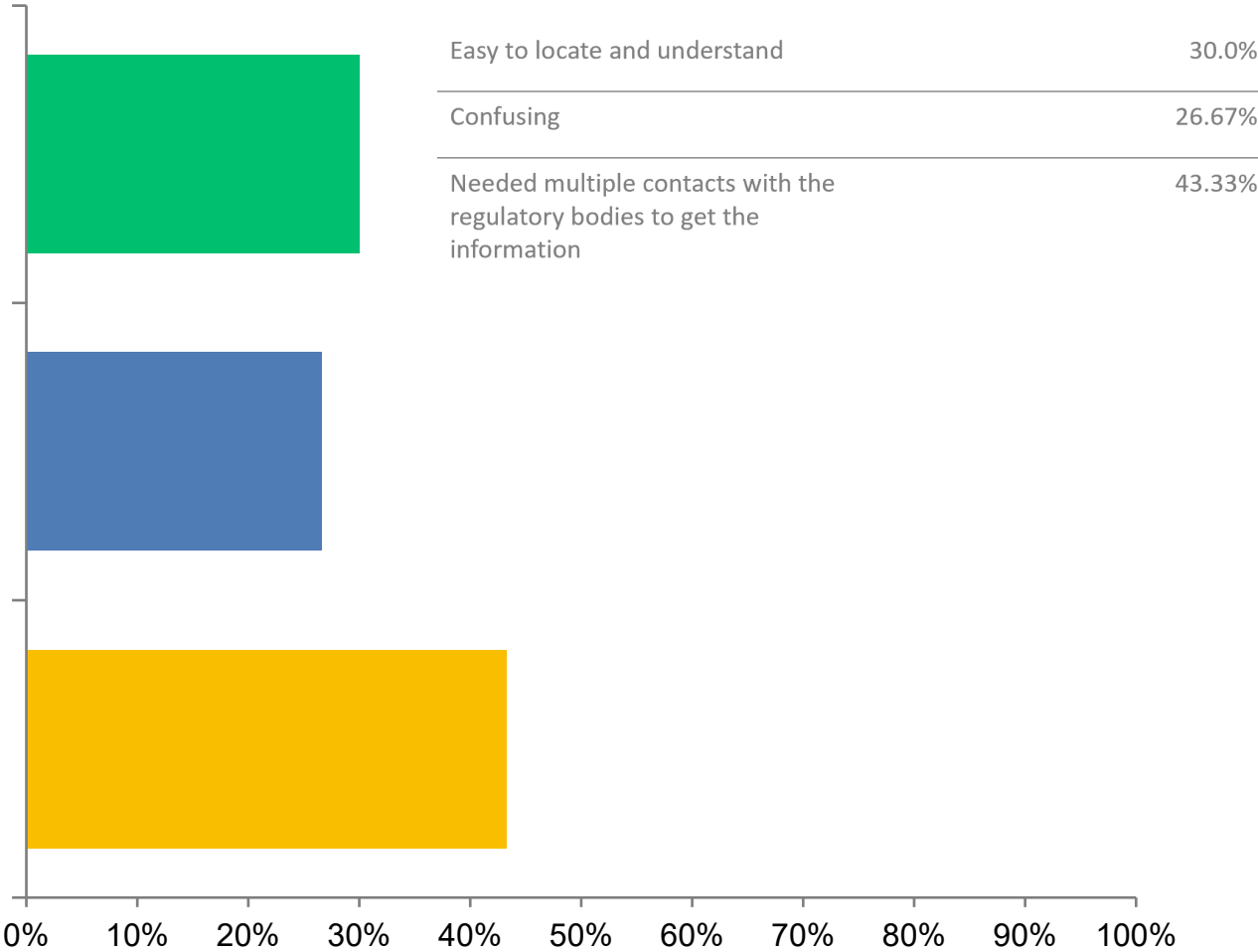


Was the information ...

Easy to locate and understand

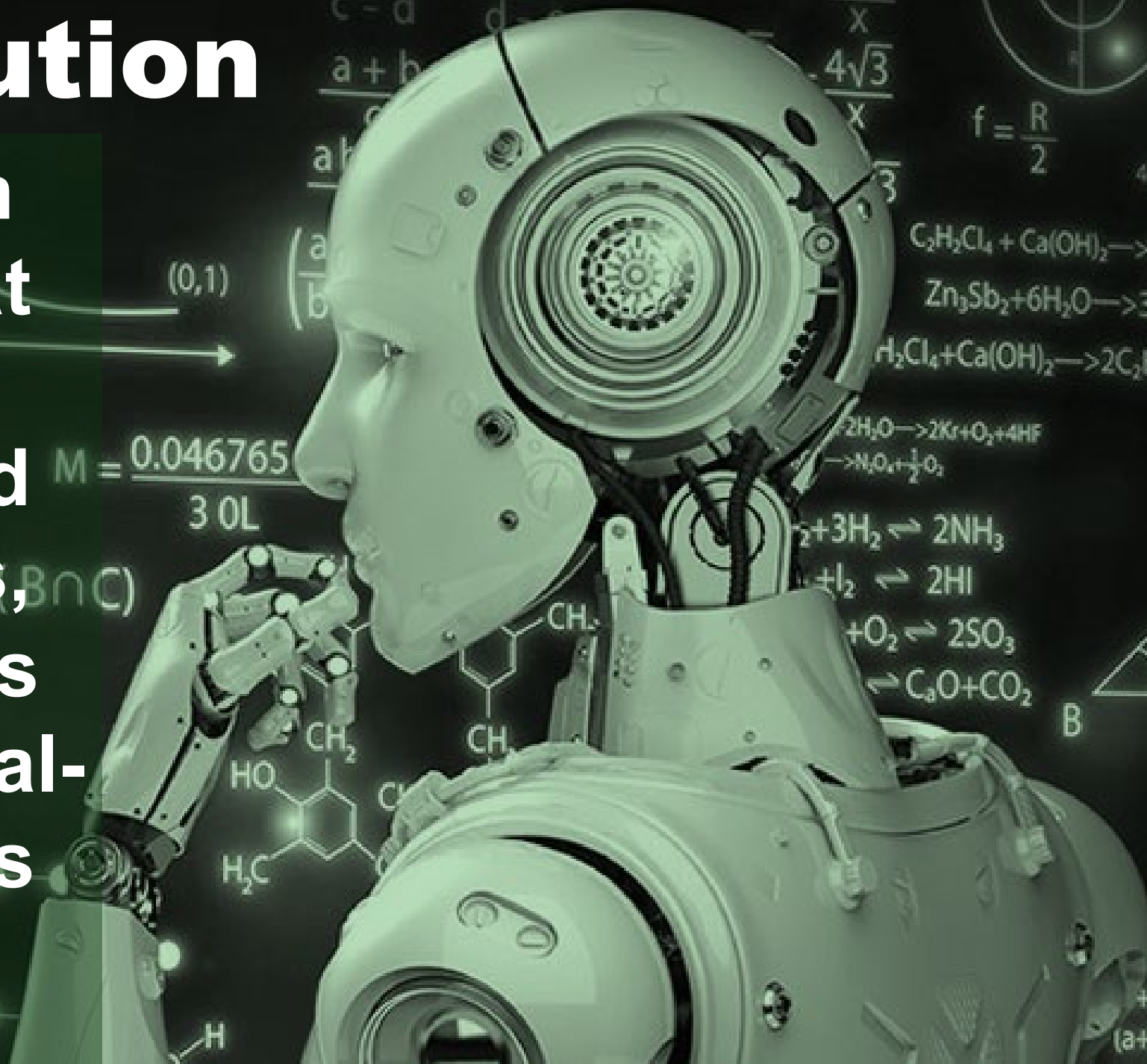
Confusing

Needed multiple contacts with the regulatory bodies to get the information



Our Solution

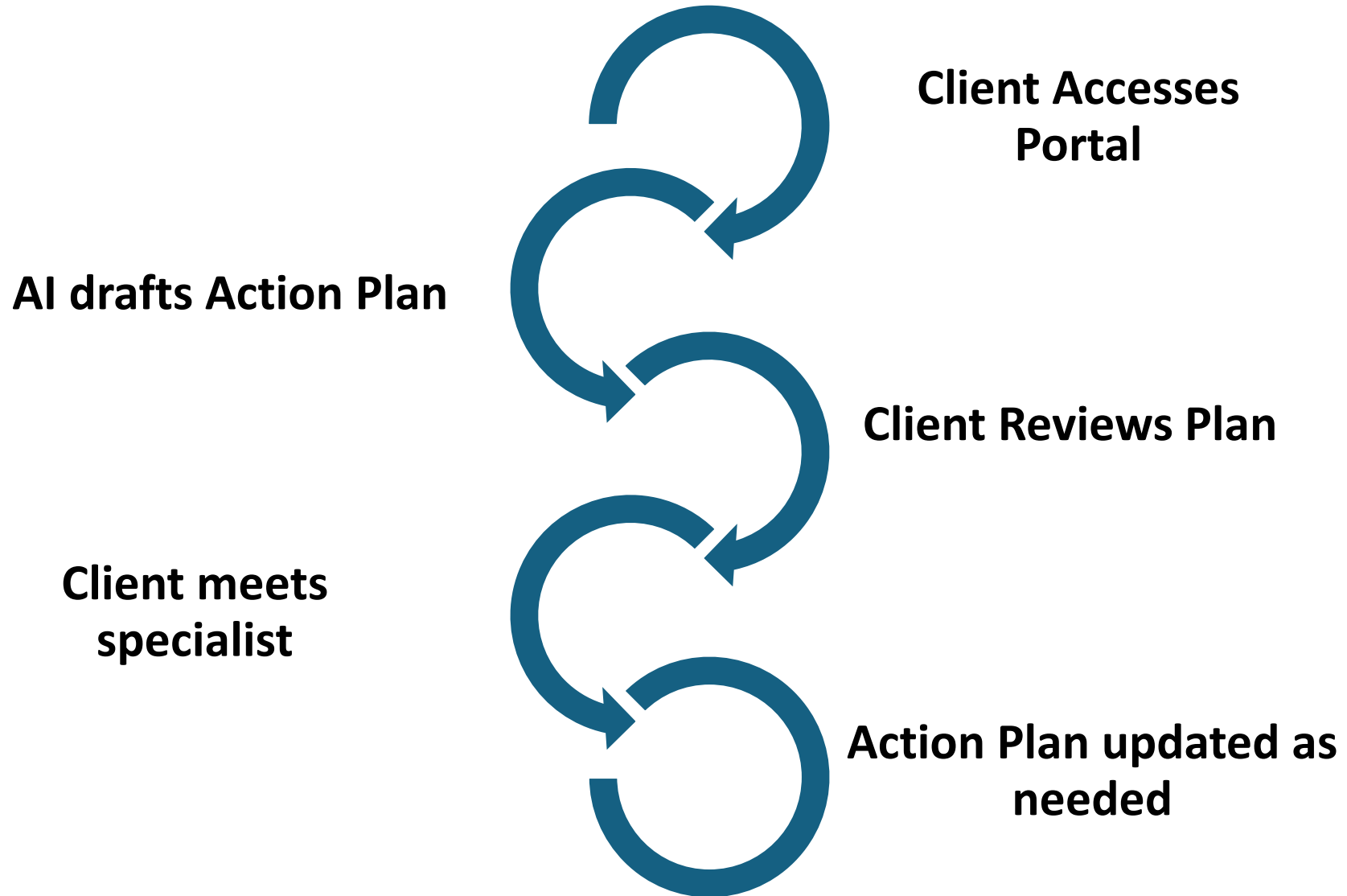
An AI-driven platform that creates personalized action plans, and provides staff with real-time updates



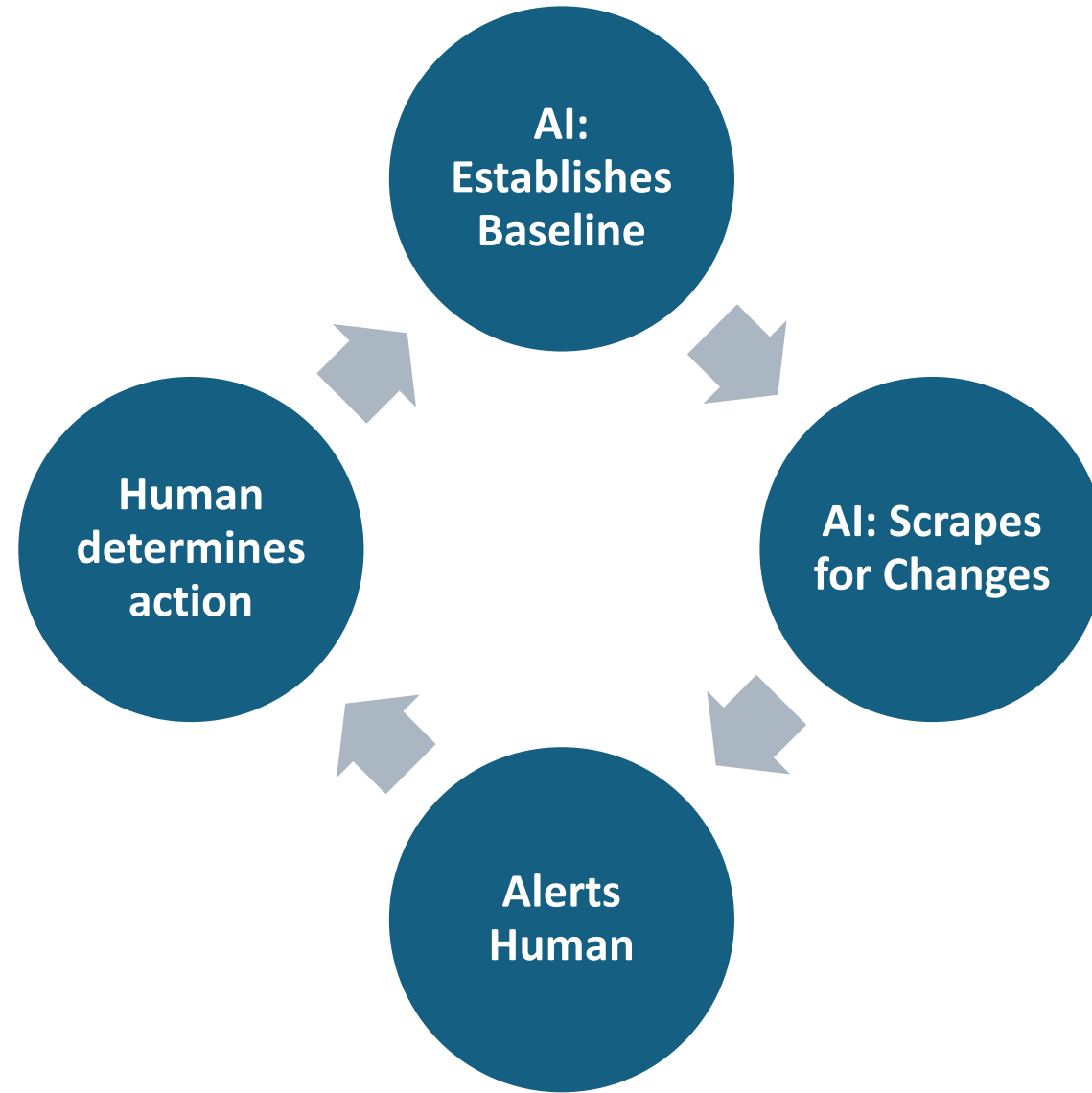
SEC

Social Enterprise
for Canada

AI: Creating Action Plans



AI: Staying Current





How AI can support **International Trained Professionals**

NEXT STEPS

- 1) Staff Review of portal/process
- 2) Client user-testing
- 3) Partner Engagement



SmartPath AI



SEC

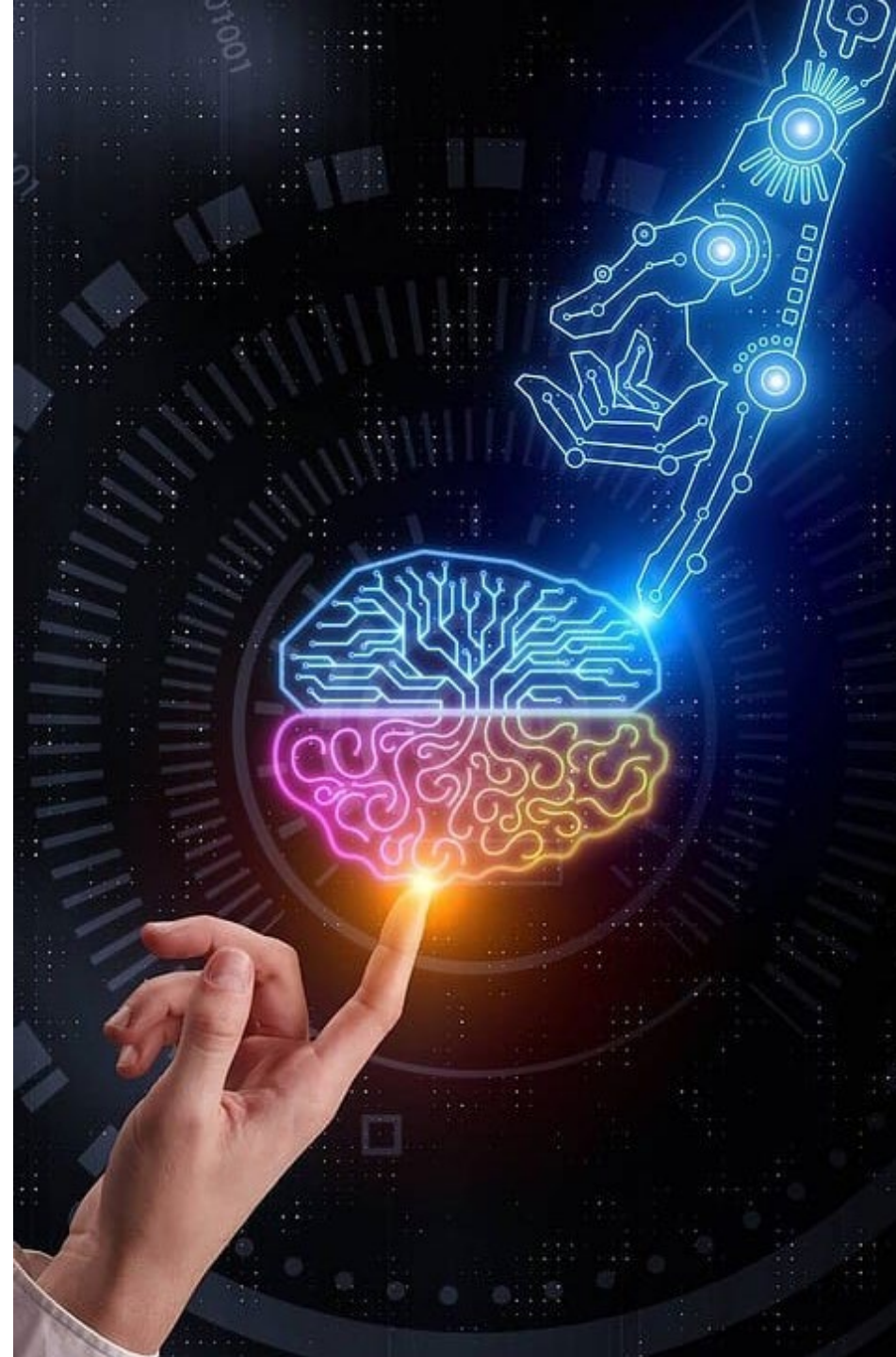
Social Enterprise
for Canada

Learnings

- **Ask some KEY questions:**
 1. Who will AI benefit?
 2. How will AI help us do something we cannot do (or do well) today?
 3. Why is using AI better?
 4. What is the upside ... downside?
 5. Where does the data come from?



dataiku



SmartPath AI

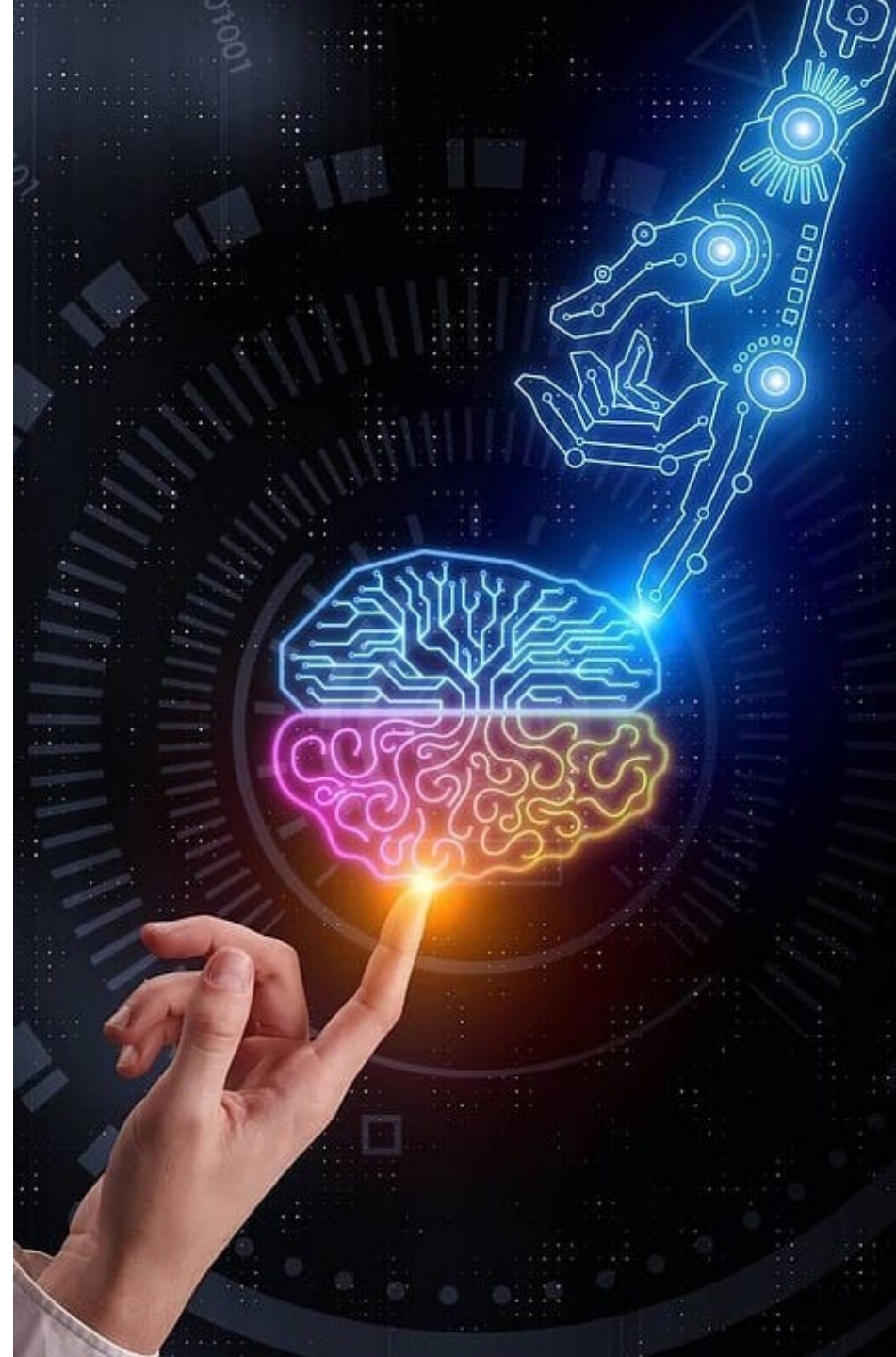


SEC

Social Enterprise
for Canada

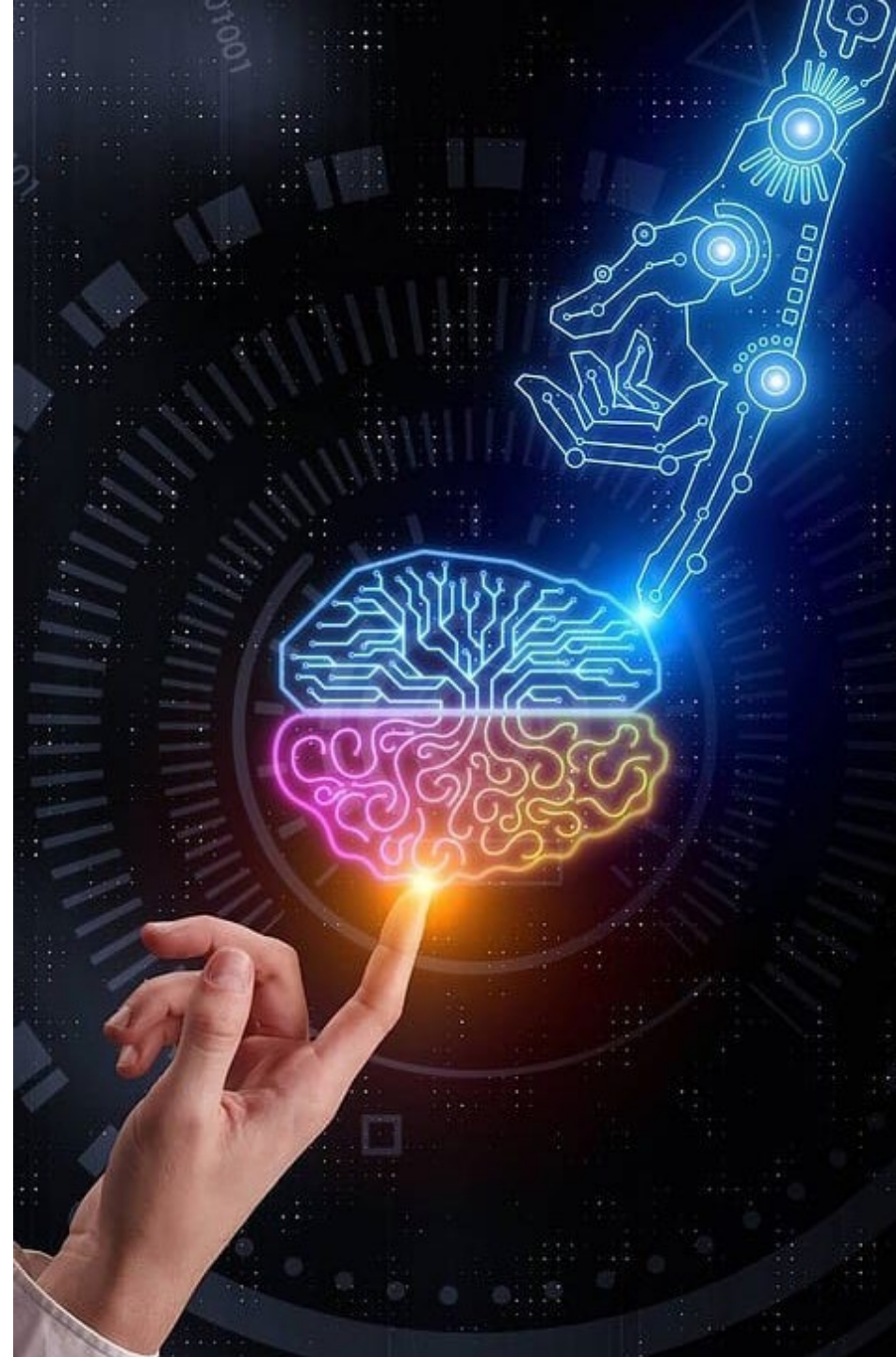
Learnings

1. Ask some KEY questions
- 2. Minimize external dependencies for a first AI project**



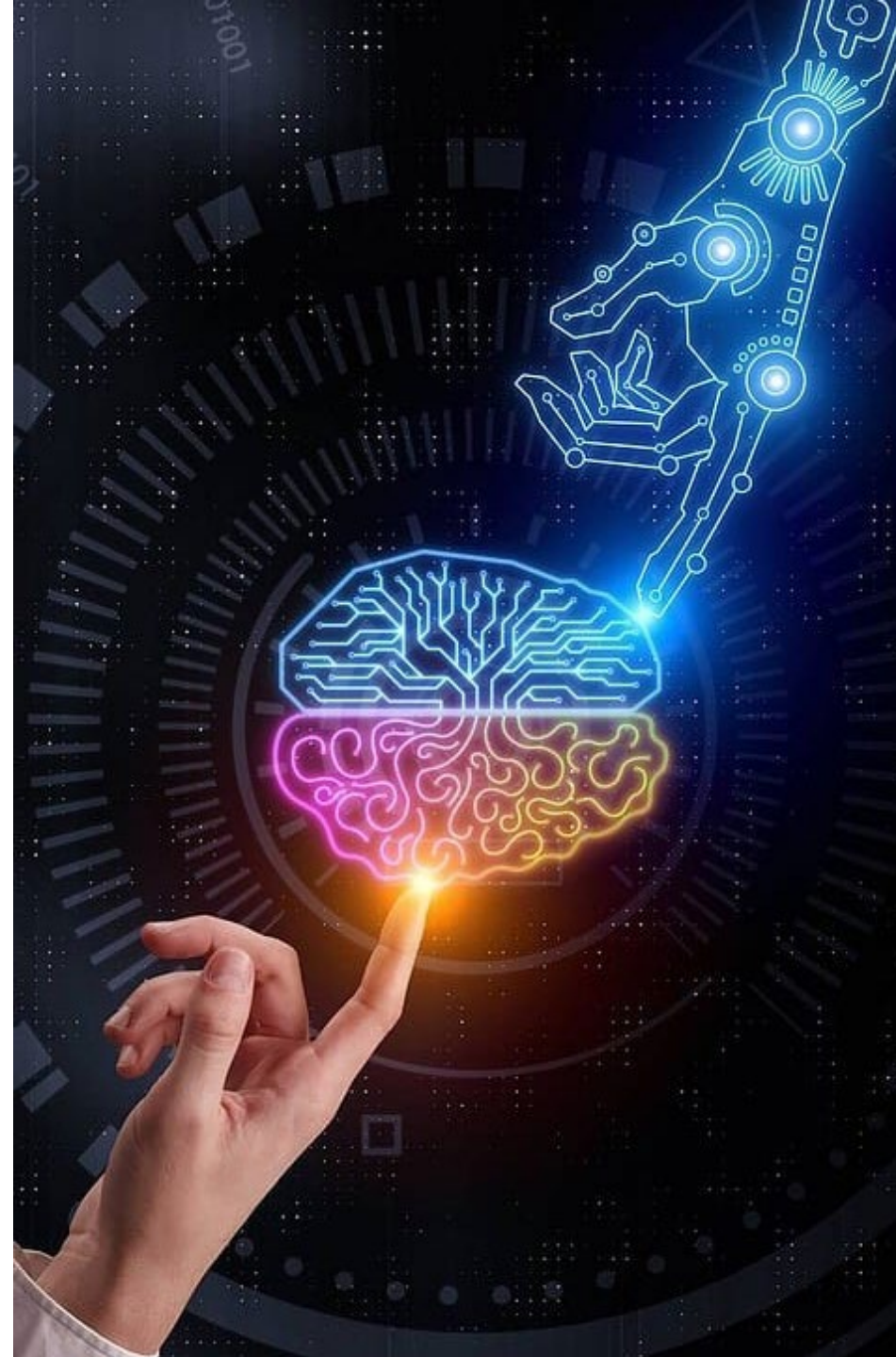
Learnings

1. Ask some KEY questions
2. Minimize external dependencies for a first AI project
3. **Stay focused**



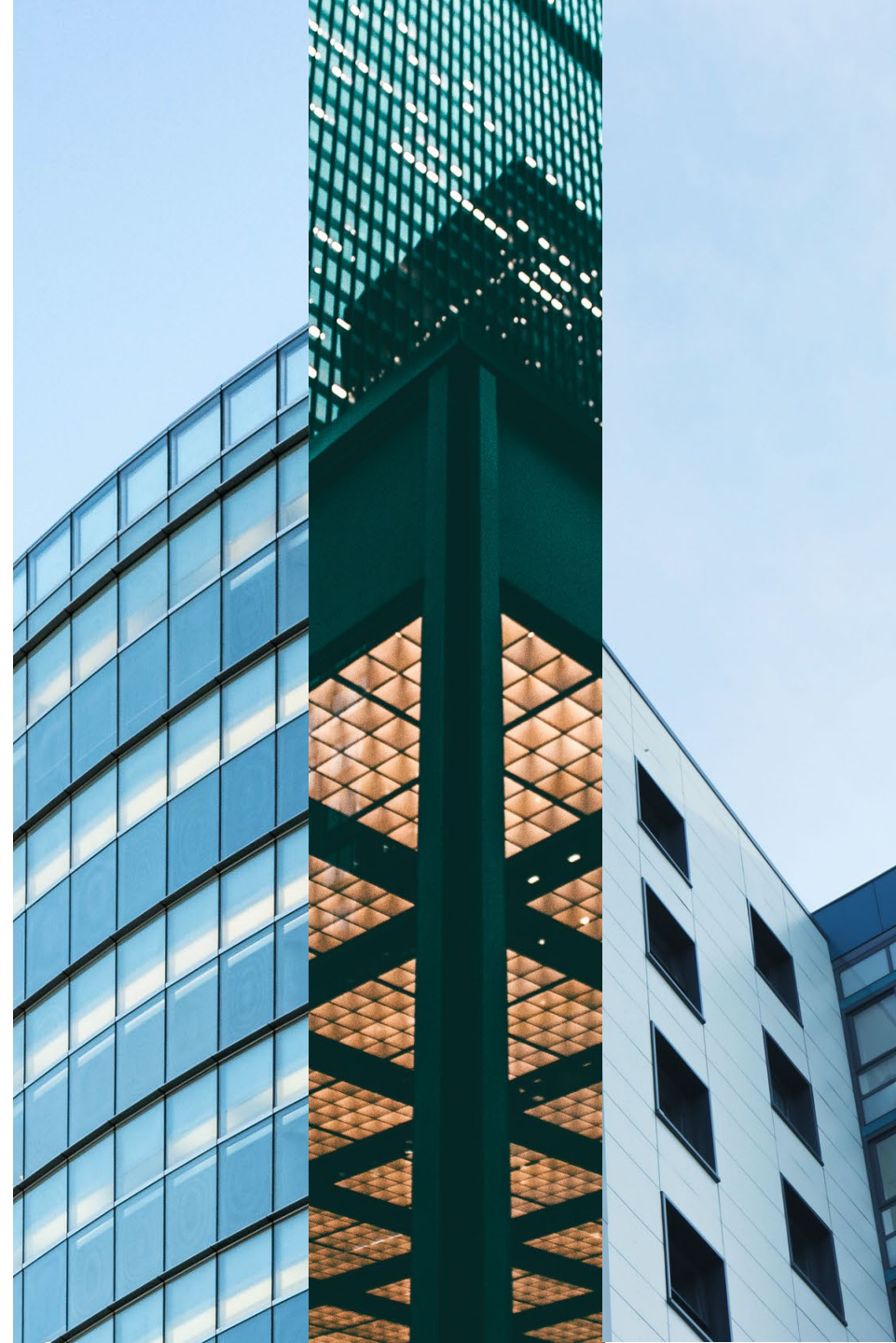
Learnings

1. Ask some KEY questions
2. Minimize external dependencies for a first AI project
3. Stay focused
4. **Involve & Prepare your staff**



Future Impact

- **Immigrants**
Improved access to clear information to support migration decision making
- **Partnerships**
Leverage the Smart Path AI to enhance their work
- **Ecosystem**
Integration with other platforms



SmartPath AI



SEC

Social Enterprise
for Canada